

CTH3 800 T6 4KW ATEX Zone 2: FAN (Ex h IIB T3 Gc) + MOTOR (Ex ec IIC T3 Gc) (279800106XN)

GENERAL DATA



ROOF FAN, ABS COWL ATEX

MANUFACTURING FEATURES

- Roof cowl made of ABS
- Structure, roof base support and bird protection guard made of galvanised steel.
- High efficiency backward impeller with self-cleaning system of steel.
- ATEX standard asynchronous motor. ATEX certified according to the zone.. IP55 protection and class F insulation. Manufactured with standard voltages: 230/400V 50Hz for three phase motors up to 4kW and 400/690V 50Hz for higher powers.

APPLICATIONS

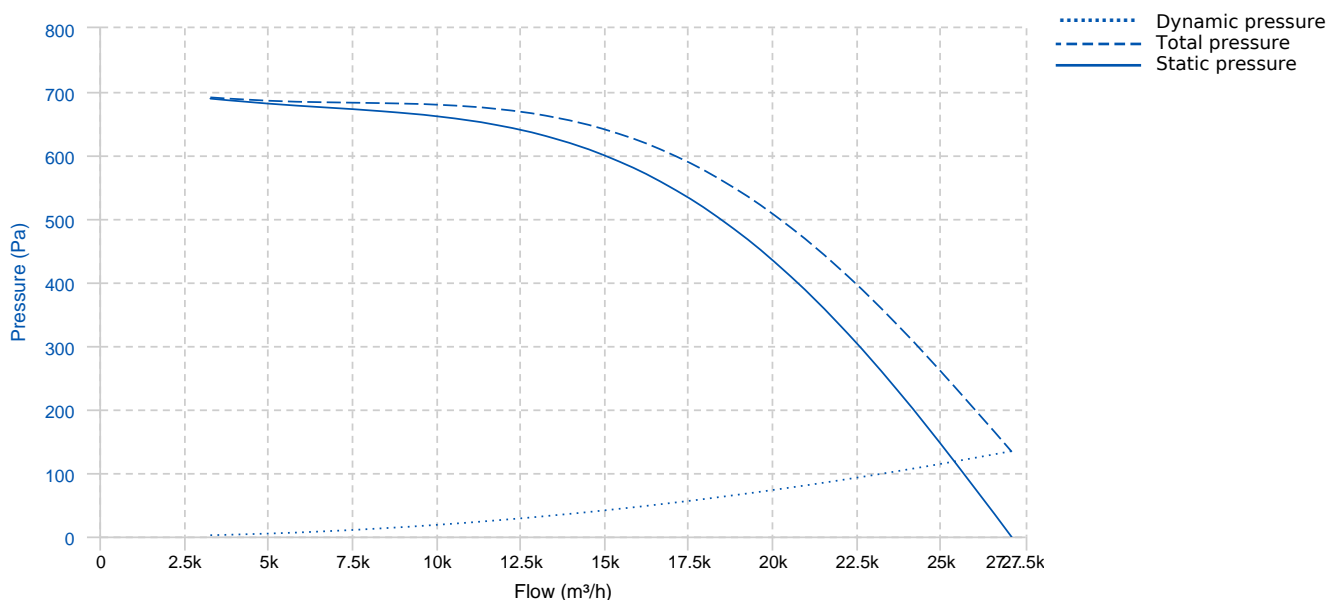
Ventilation in indoor environments classified as ATEX. Specially designed for roof installation, they are suitable for:

- Smoke extraction.
- Smoke emergency exhaust with motor outside the hazardous area.
- Air renewal in buildings and industries.
- Industrial and professional kitchen hoods.
- Working temperature: ambient from -20°C to 40°C, transported air according to the ATEX classification.

UNDER REQUEST

- 60Hz and special voltages.

PERFORMANCE CURVE



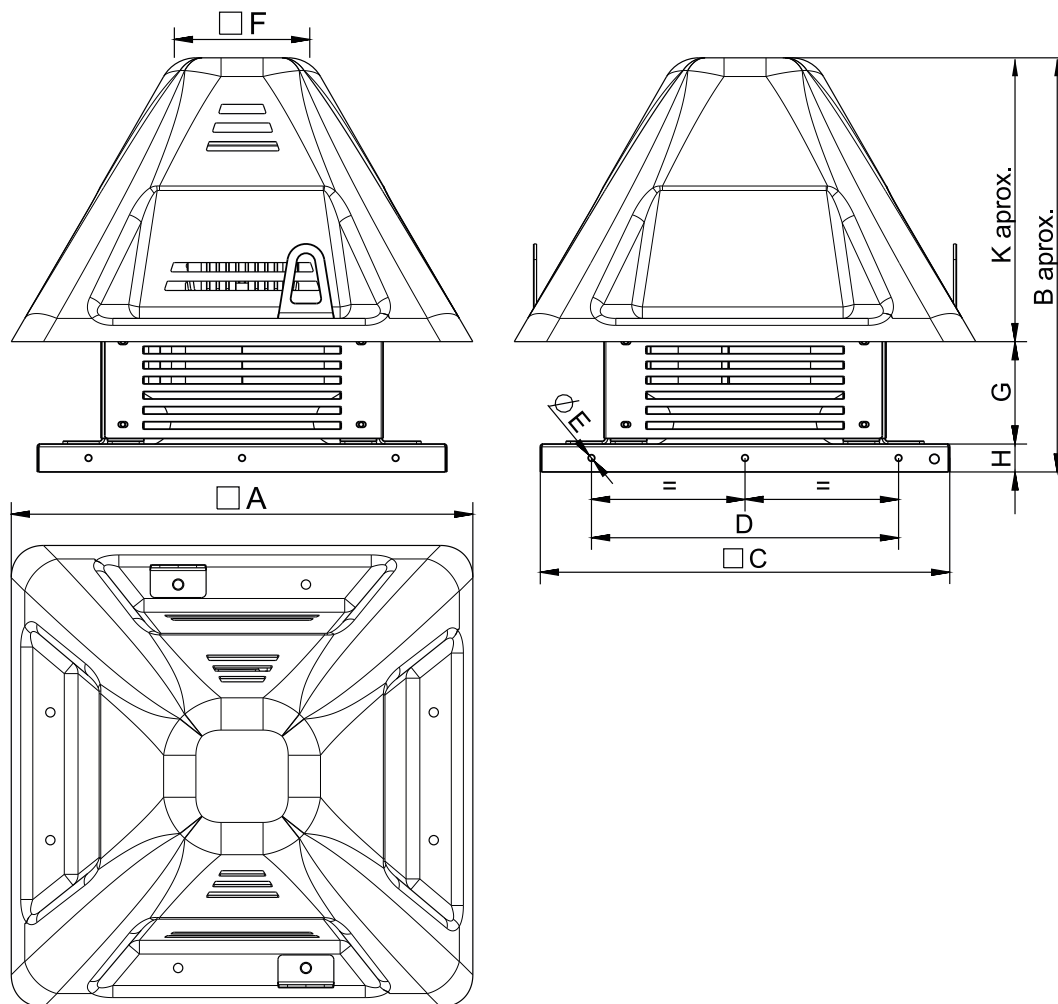
TECHNICAL DATA

Fan							
RPM	960	Approx. weight	410 kg	Max. Flow	27090 m³/h		
Motor							
Power	4 kW	RPM	960	I max. (230V)	16,5 A	I max. (400V)	9,46 A

Motor

Size	132M	Approx. weight	68 kg	Efficiency (%)	84 %	FP	0.74
------	------	----------------	-------	----------------	------	----	------

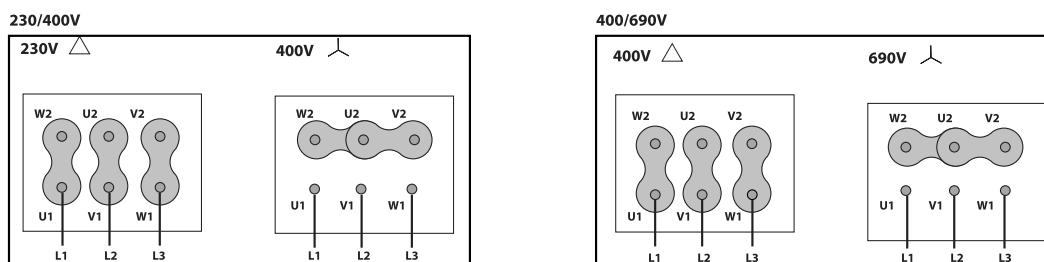
DIMENSIONS



Dimensions (mm)

A	1168,5	B aprox	1145	C	1035	D	840	E	9
F	429,6	G	466	H	50	K aprox	629		

WIRING DIAGRAM



ACCESSORIES



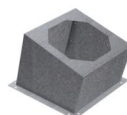
SAFETY SWITCH
INT 25 3P A
REF: INT253PA



ATEX SWITCH
INT 16 ATEX
REF: 510200016X



FREQUENCY SPEED CONTROLLER
SFC 400 III 12A *
REF: SFC400III12



INCLINED ROOF FAN SUPPORT
BTI 1015
REF: A-508701015XX

SPARE PARTS



	Code	Model	Qty
1	R-279714479	ROOF COWL CTH3 710-800	x1
3	R-CTB-CTH801-38A LG	IMPELLER CTH3 801 D.38 LG	x1